



The Stewardship Network
Western Lake Erie Cluster

Frog & Toad Listen

Join the Western Lake Erie Cluster for a fun family event at Crosswinds Marsh. Come learn about amphibians of Southeast Michigan. The first 30 minutes of the event will be filled with learning activities teaching you how to identify species by call and the last 60 minutes will consist of a field activity.

Intro to frog life cycle & habitat

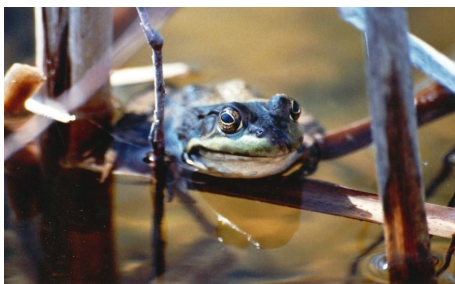
Learn frog calls

Nature hike, listen to amphibians, and identify species (~1 mile)

(Please dress appropriately for the weather and terrain.)

This is an outdoors activity for the whole family to enjoy.

Saturday,
April 21, 2017
6:30—8:00 pm
Free & Open to the Public

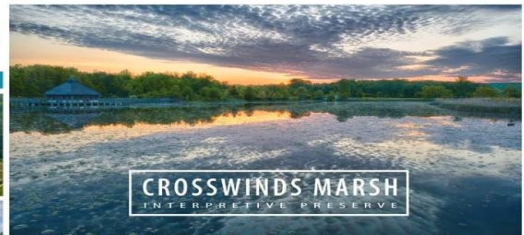


<https://www.facebook.com/Crosswinds-Marsh-Wetland-Interpretive-Preserve>

One of the largest self-sustaining wetlands projects in the nation, Crosswinds Marsh shines as a model of ecological restoration, a national benchmark for environmental design, and a beloved regional recreational asset.



2015 MICHIGAN ASLA LEGACY AWARD



CROSSWINDS MARSH
INTERPRETIVE PRESERVE

Created for the Detroit Metropolitan Airport to meet regulatory requirements for expansion, Crosswinds Marsh was an ambitious concept from the start: re-creating hundreds of acres of wetland preserve for wildlife habitat, while also developing a public resource that would benefit the residents of Wayne County. It was a project few thought could succeed, yet it has become one of the largest self-sustaining wetland mitigation projects in the nation. Crosswinds Marsh serves as a national benchmark for environmental design and ecological restoration. Restoring 3,000 acres of historical wetland habitat that had been drained for agriculture and residential use, while creating habitat for hundreds of native flora and fauna species. As a sign of its success, its natural diversity has continued to evolve over the years. Crosswinds Marsh invites the public to experience this thriving natural setting in many ways. While limiting access to sensitive areas, the design welcomes low-impact recreation like hiking, horseback riding, birding, fishing, and boating, and offers varied environmental learning opportunities. It has become an incredible outdoor experience for thousands of annual visitors.

SMITHGROUP JJR

<https://www.facebook.com/Crosswinds-Marsh-Wetland-Interpretive-Preserve>

Crosswinds Marsh
27600 Haggerty Road
New Boston, MI 48164

For more information:

Visit the Western Lake Erie Cluster website

<http://www.stewardshipnetwork.org/clusters/western-lake-erie-cluster>

Brittany Santure - Cluster Coordinator

Office: 734-240-9682

E-mail: bsanture@rriearth.org